




>> Type of use (*)

This garment will help you in every painting works, in the food industry, for maintenance and or cleaning activities, for nurses, ambulance drivers... (*) Exclusive use against temperate cold. Do not use in exceptional nor extreme conditions. Seasonal clothing. (*)

(*) Non-waterproof fabric, not recommended against the rain.

>> Technical features

- ✓ Bodywarmer.
- ✓ Polyester/cotton outshell.
- ✓ Lining: polyester.
- ✓ Padding: polyester.
- ✓ High collar.
- ✓ 2 front pockets. 1 mobile pocket.
- ✓ 1 inside pocket.
- ✓ Elastic waistband.
- ✓ Colour: navy blue.
- ✓ Sizes and packings:

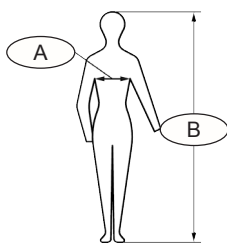
	M, L, XL, 2XL, 3XL	
Carton	10 units	
Bundle	1 unit	

Learn more: www.singer.fr

>> Advantages

- ✓ Minimalist styling and no-fuss simplicity make this a universal-use bodywarmer.
- ✓ Two convenient outside pockets.
- ✓ Warm padding. With high collar for good protection of the neck against cold and wind.
- ✓ With loins protection for better protection and comfort.

size	Chest (cm) (A)	Height (cm) (B)
M	92-104	166-178
L	100-112	172-184
XL	108-120	180-192
2XL	116-128	188-200
3XL	126-138	192-204



>> Conformity

This model complies with **European Regulation (EU) 2016/425** on Personal Protective Equipment (PPE). **Category I item.**

Regulation (EU) 2016/425 ().**

The PPE is subject to the conformity assessment procedure based on internal production control (**module A**) set out in Annex IV (**Minor risks**).

Download the EU declaration of conformity on: <http://docs.singer.fr>

(**) ANNEX I, Category I, e) : Atmospheric conditions that are not of an extreme nature.

Your distributor **SINGER® SAFETY**

